

09/08/25

PROJECT: B-6034

CONTRACT: DN01144

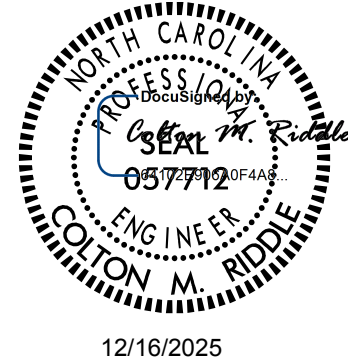
STATE OF NORTH CAROLINA
DIVISION OF HIGHWAYS

PAVEMENT MARKING PLAN
JACKSON COUNTY

LOCATION : BRIDGE NO. 490065 OVER SAVANNAH CREEK
ON SR 1300 (PUMPKINTOWN ROAD)

PROJECT REFERENCE NO.
B-6034

SHEET NO.
PMP-1



12/16/2025

DOCUMENT NOT CONSIDERED FINAL
UNLESS ALL SIGNATURES COMPLETED

ROADWAY STANDARD DRAWING

THE FOLLOWING ROADWAY STANDARDS AS APPEAR IN "ROADWAY STANDARD DRAWINGS" - PROJECT SERVICES UNIT - N.C. DEPARTMENT OF TRANSPORTATION - RALEIGH, N.C. DATED JANUARY 2024 ARE APPLICABLE TO THIS PROJECT AND BY REFERENCE HEREBY ARE CONSIDERED A PART OF THESE PLANS:

STD. NO.	TITLE
1205.01	PAVEMENT MARKINGS - LINE TYPES AND OFFSETS
1205.02	PAVEMENT MARKINGS - TWO LANE & MULTILANE ROADWAYS
1205.04	PAVEMENT MARKINGS - INTERSECTIONS
1205.12	PAVEMENT MARKINGS - BRIDGES
1261.01	GUARDRAIL AND BARRIER DELINEATORS - INSTALLATION SPACING
1261.02	GUARDRAIL AND BARRIER DELINEATORS - TYPES & MOUNTING
1262.01	GUARDRAIL END DELINEATION

GENERAL NOTES

THE FOLLOWING GENERAL NOTES APPLY AT ALL TIMES FOR THE DURATION OF THE CONSTRUCTION PROJECT, EXCEPT WHEN OTHERWISE NOTED IN THE PLAN, OR DIRECTED BY THE ENGINEER.

A) INSTALL PAVEMENT MARKINGS ON THE FINAL SURFACE

ROAD NAME:	MARKING	MARKER
SR 1300 (PUMPKINTOWN ROAD)	PAINT	NONE
SR 1304 (PERLEY HYATT RD.)	PAINT	NONE

B) TIE PROPOSED PAVEMENT MARKING LINES TO EXISTING PAVEMENT MARKING LINES.

C) REMOVE/REPLACE ANY CONFLICTING/DAMAGED PAVEMENT MARKINGS AND MARKERS.

D. TEMPORARY PAVEMENT MARKINGS ARE PLACED IN ONE (1) COAT OF PAINT, AND FINAL PAVEMENT MARKINGS ARE PLACED IN TWO (2) COATS OF PAINT.

INDEX

SHEET NO.	DESCRIPTION
PMP-1	PAVEMENT MARKING PLAN TITLE SHEET
PMP-1A	DETAIL IN LIEU OF STANDARD
PMP-2	PAVEMENT MARKING DETAIL AND SCHEDULE

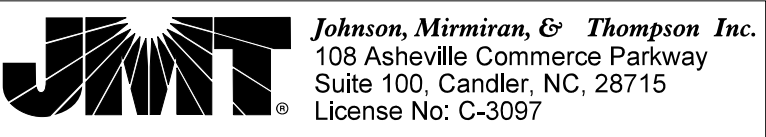
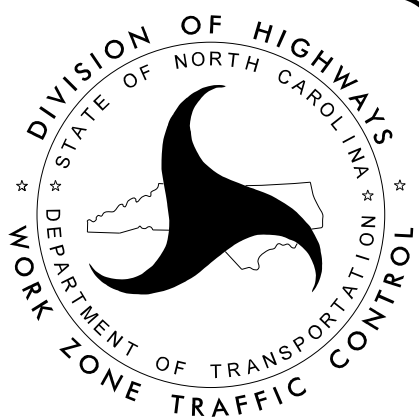
PAVEMENT MARKING
SCHEDULE

FINAL
PAVEMENT MARKINGS

SYMBOL	DESCRIPTION
PAINT (4")	
P1	WHITE EDGELINE
P13	YELLOW DOUBLE CENTER
P5	2FT. -6FT. SP WHITE MINISKIP
PAINT (24")	
P61	WHITE STOPBAR

PLANS REVIEWED BY: N.C.D.O.T SIGNING AND DELINEATION UNIT

K. L. JORDAN	SIGNING & DELINEATION REGIONAL ENGINEER
M. TRACEY, P.E.	SIGNING & DELINEATION PROJECT DESIGN ENGINEER



TRANSPORTATION
ENGINEER COLTON M. RIDDLE, P.E.
TRANSPORTATION
DESIGN COLTON M. RIDDLE, P.E.
ENGINEER